

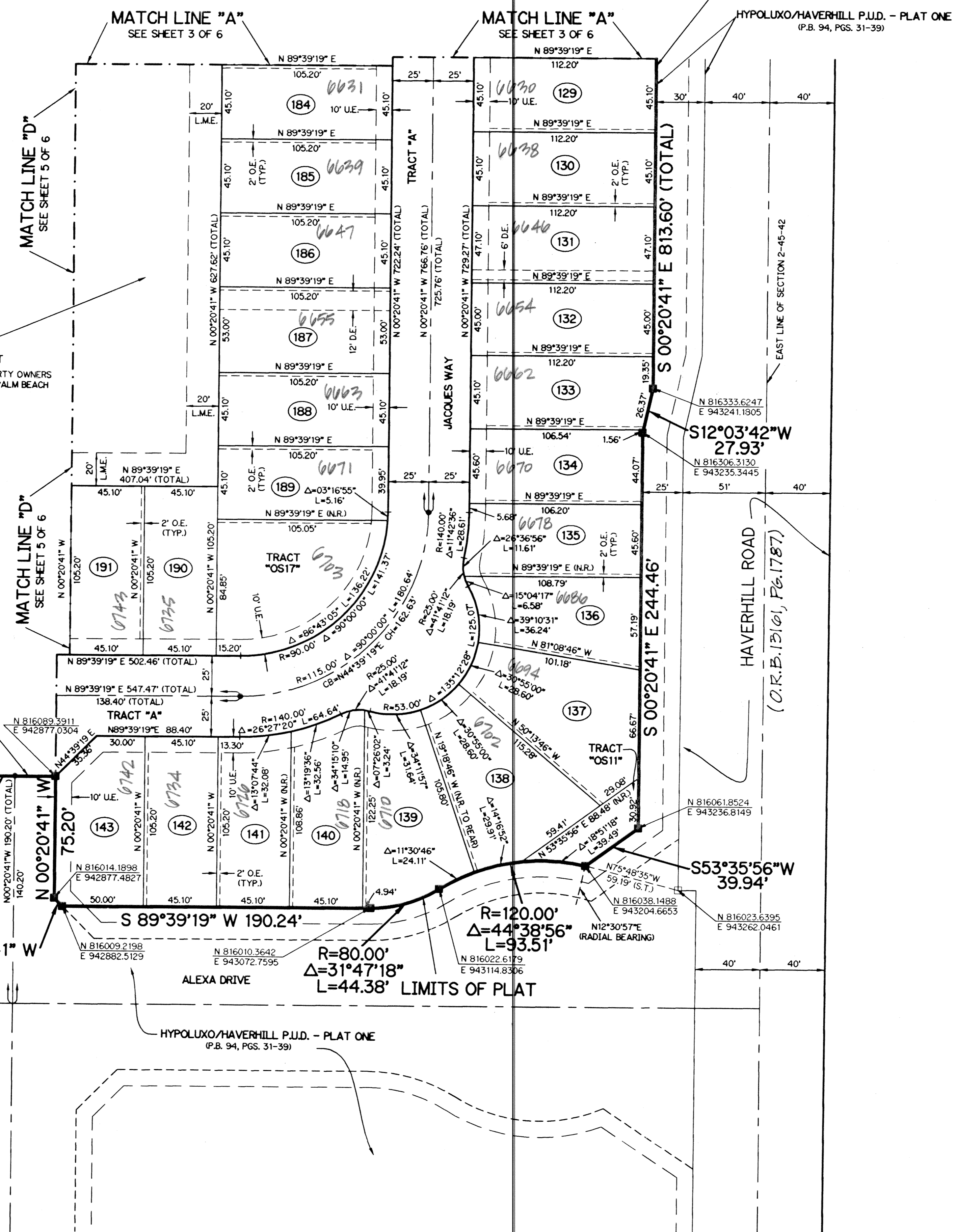
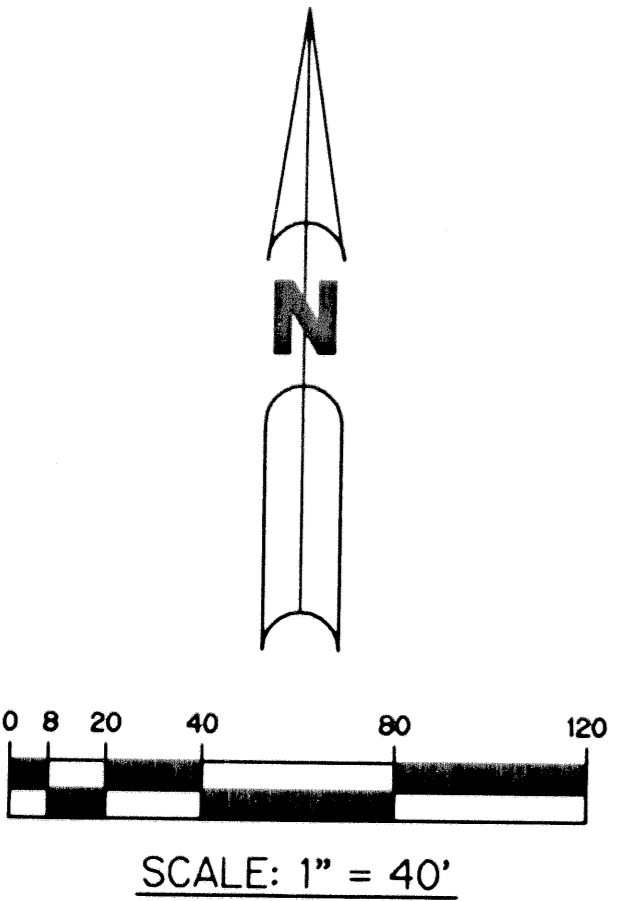
HYPOLUXO/HAVERHILL P.U.D. - PLAT TWO

BEING A REPLAT OF TRACT "B", HYPOLUXO/HAVERHILL P.U.D. - PLAT ONE, AS RECORDED IN PLAT BOOK 94, PAGES 31 THROUGH 39, INCLUSIVE, ALL OF THE PUBLIC RECORDS OF PALM BEACH COUNTY, FLORIDA, LYING IN SECTION 2, TOWNSHIP 45 SOUTH, RANGE 42 EAST, PALM BEACH COUNTY, FLORIDA.

SHEET 2 OF 6 JANUARY, 2002 LIMITS OF PLAT

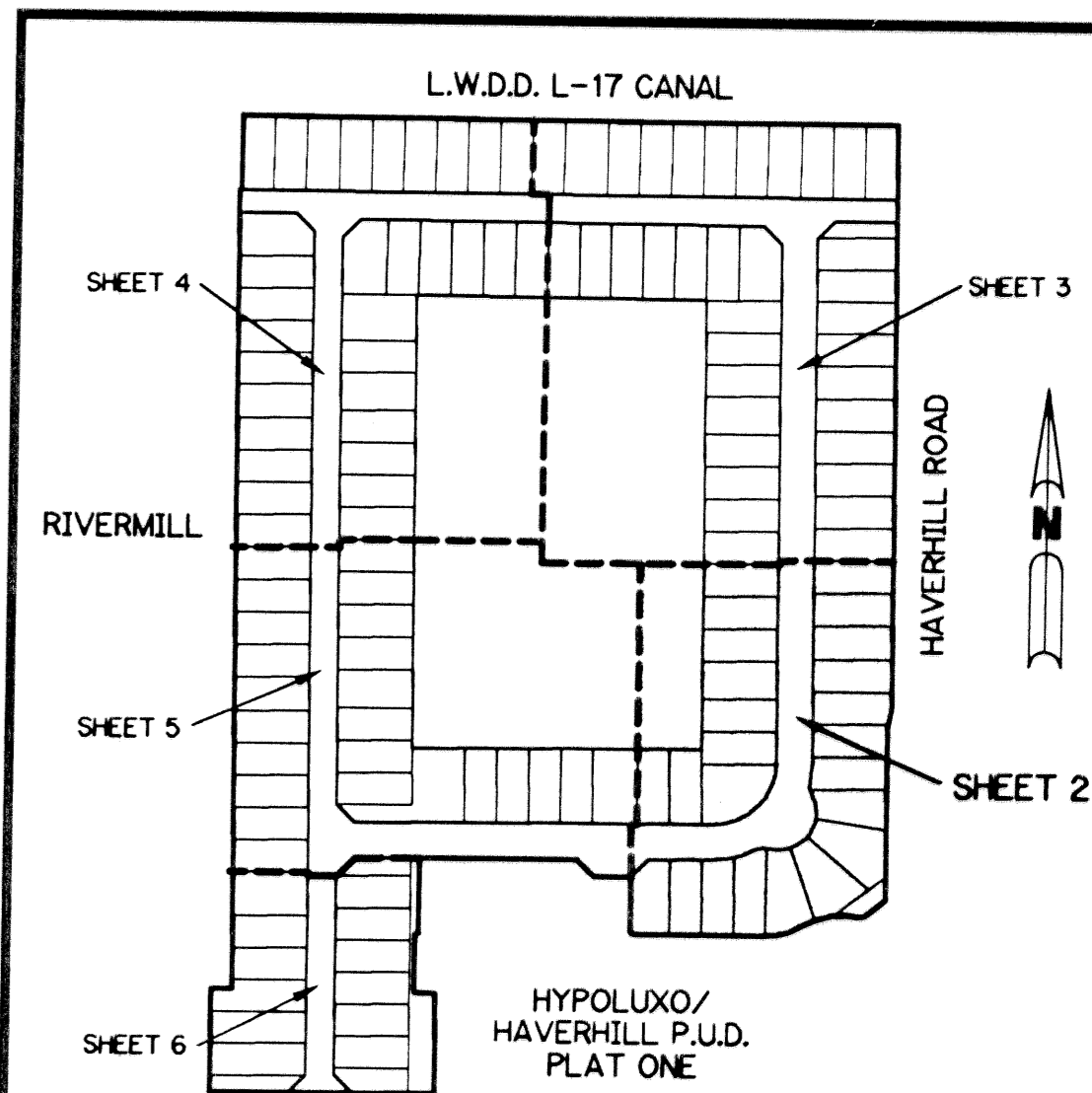
THIS INSTRUMENT PREPARED BY
WILBUR F. DIVINE, P.S.M. 4190, STATE OF FLORIDA
LAWSON, NOBLE AND WEBB, INC., LB-6674
ENGINEERS PLANNERS SURVEYORS
420 COLUMBIA DRIVE, SUITE 110
WEST PALM BEACH, FLORIDA

TRACT "L2"
WATER MANAGEMENT TRACT
(SHALL BE MAINTAINED BY COCOPUM PROPERTY OWNERS ASSOCIATION, INC. WITHOUT RECOURSE TO PALM BEACH COUNTY, FLORIDA.
5.882 ACRES



- LEGEND:**
- - SET PERMANENT REFERENCE MONUMENT, L.B. #6674
 - - FOUND PERMANENT REFERENCE MONUMENT, L.B. #6674
 - - SET PERMANENT CONTROL POINT, L.B. #6674
 - - FOUND PERMANENT CONTROL POINT, L.B. #6674
 - Δ - DELTA ANGLE
 - B.E. - BUFFER EASEMENT
 - CB - CHORD BEARING
 - CH - CHORD DISTANCE
 - C - CENTERLINE
 - D.B. - DEED BOOK
 - D.E. - DRAINAGE EASEMENT
 - L - ARC LENGTH
 - L.A.E. - LIMITED ACCESS EASEMENT
 - L.M.A.E. - LAKE MAINTENANCE ACCESS EASEMENT
 - L.M.E. - LAKE MAINTENANCE EASEMENT
 - L.W.D.D. - LAKE WORTH DRAINAGE DISTRICT
 - N.R. - NOT RADIAL
 - N.T.S. - NOT TO SCALE
 - O.R.B. - OFFICIAL RECORD BOOK
 - P.B. - PLAT BOOK
 - PGS. - PAGES
 - P.S.M. - PROFESSIONAL SURVEYOR AND MAPPER
 - R - RADIUS
 - RAD. - RADIAL
 - R/W - RIGHT-OF-WAY
 - S.T. - SURVEY TIE
 - U.E. - UTILITY EASEMENT
 - O.E. - OVERHANG EASEMENT
 - N 737648.0171 E 905258.2326 - DENOTES STATE PLANE COORDINATES

NOTE:
COORDINATES SHOWN ARE GRID COORDINATES
DATUM = NAD 83 (1990 ADJUSTMENT)
ZONE = FLORIDA EAST ZONE
LINEAR UNIT = U.S. SURVEY FEET
COORDINATE SYSTEM = 1983 STATE PLANE TRANSVERSE MERCATOR PROJECTION
ALL DISTANCES ARE GROUND
SCALE FACTOR = 1.000034481
PLAT BEARING = GRID BEARING
NO ROTATION



SECTION HYPOLUXO/HAVERHILL P.U.D.
PAGE 71
FLOOD MAP # 1756
ZONING P.O.D.
QUAD # 34
ZIP CODE 33463
TAX 434
PUB NAME HYPOLUXO/HAVERHILL P.U.D.